

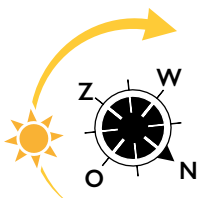


## LIVING IN THE MIDDLE OF THE CULTURAL HEART OF THE HAGUE

### TYPE L2 Schedeldoekshaven-side

- Floors 14 to 16
- Floor space approx. 83.0 m<sup>2</sup>
- 2 bedrooms
- Outdoor space 4,7 m<sup>2</sup>

- The corner kitchen is equipped with a Quooker tap, an ATAG dishwasher, combi oven with integrated microwave, 80 cm wide induction hob, stainless steel extractor hood with stainless steel splash screen, fridge with freezer compartment and black composite kitchen worktop.
- Balcony on the south-east of approx. 4.7 m<sup>2</sup>.
- Two bedrooms of approx. 7.9 and 16 m<sup>2</sup>.
- The indoor storage room includes space, drains and water lines for the washing machine and dryer.
- The bathroom has a walk-in shower with hard glass wall and walk-in door, stainless steel shower drain, sink and electric towel radiator. The floor has large light gray tiles; the walls have white wall tiles up to the ceiling.

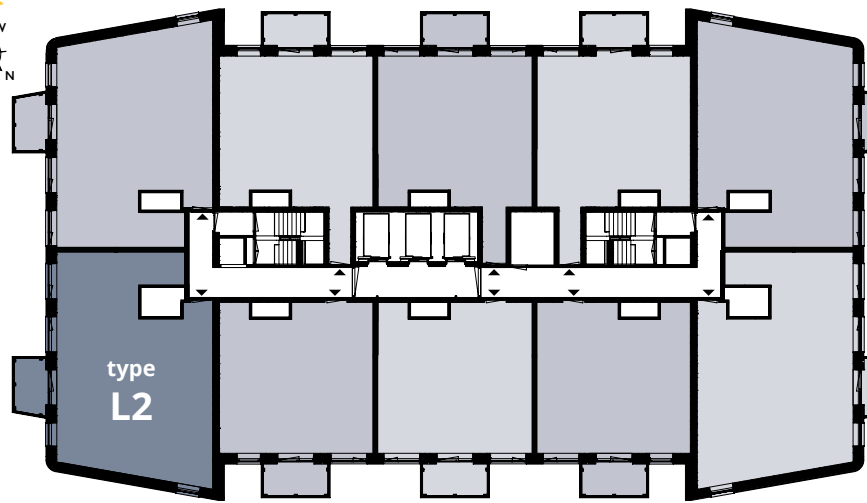




### FLOORS 14 TO 16



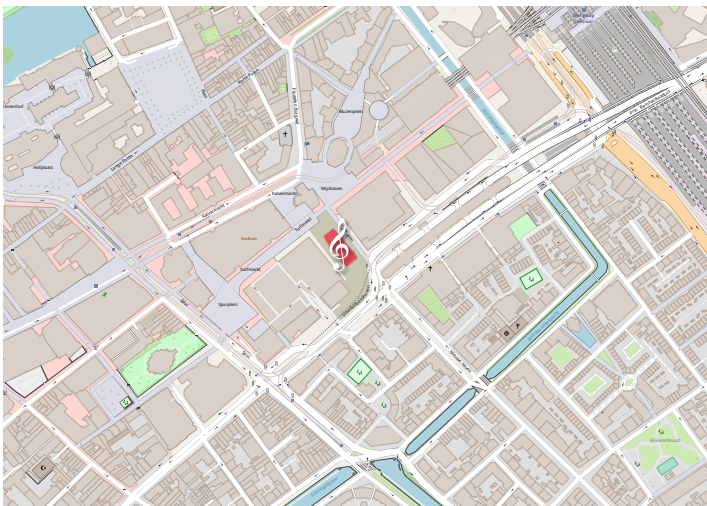
Schedeldoekshaven



Trufmarkt

Turfhaven

### LOCATION



### YOU CAN FIND THIS TYPE AT:

- 14th floor | Turfhaven 323
- 15th floor | Turfhaven 343
- 16th floor | Turfhaven 363