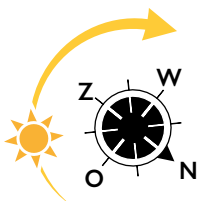




LIVING IN THE MIDDLE OF THE CULTURAL HEART OF THE HAGUE

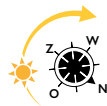
TYPE E2

- Floors 3 to 13
 - Floor space approx. 52.8 m²
 - 1 bedroom
 - Outdoor space 7.4 m²
- The kitchen is equipped with an ATAG dishwasher, combi oven with integrated microwave, induction stove, stainless steel extractor hood with stainless steel splash screen, fridge with freezer compartment and black composite kitchen worktop.
 - Balcony on the north-west of approx. 7.4 m².
 - One bedroom of approx. 11.9 m².
 - The indoor storage room includes space, drains and water lines for the washing machine and dryer.
 - The bathroom has a walk-in shower with hard glass wall and walk-in door, stainless steel shower drain, sink and electric towel radiator. The floor has large light gray tiles; the walls have white wall tiles up to the ceiling.

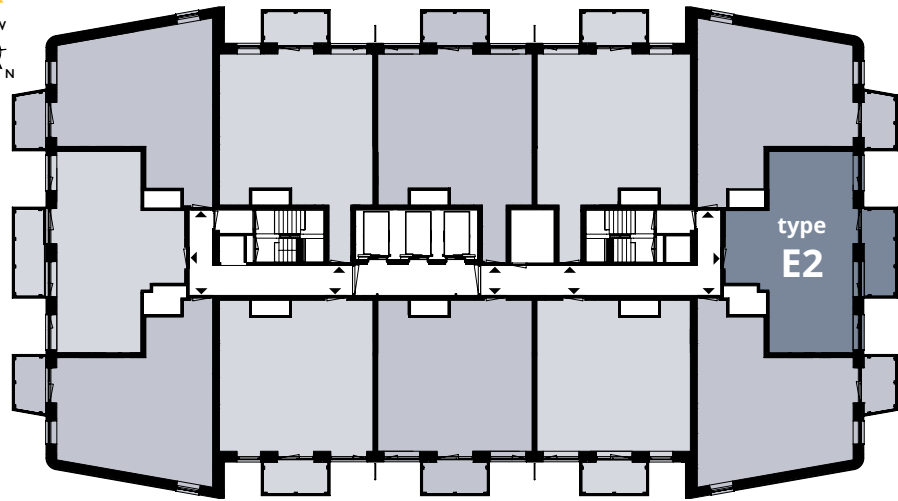




FLOORS 3 TO 13



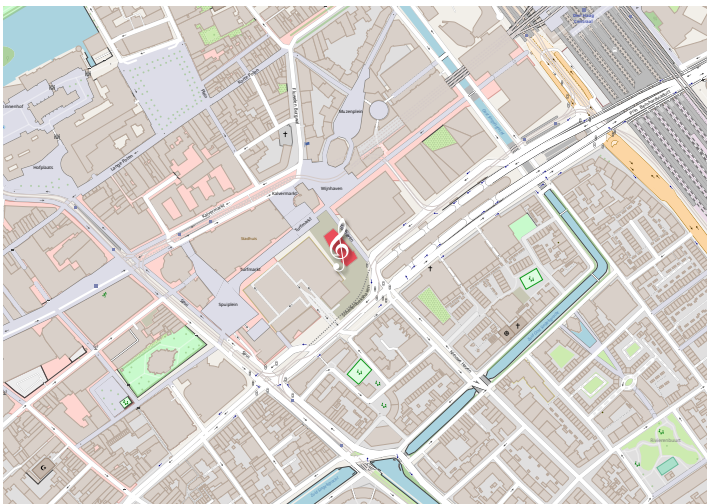
Schedeldoekshaven



Trufmarkt

Turfhaven

LOCATION



YOU CAN FIND THIS TYPE AT:

- | | |
|---------------------------|----------------------------|
| 3rd floor Turfhaven 71 | 9th floor Turfhaven 215 |
| 4th floor Turfhaven 95 | 10th floor Turfhaven 239 |
| 5th floor Turfhaven 119 | 11th floor Turfhaven 263 |
| 6th floor Turfhaven 143 | 12th floor Turfhaven 287 |
| 7th floor Turfhaven 167 | 13th floor Turfhaven 311 |
| 8th floor Turfhaven 191 | |