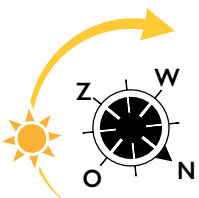


TYPE E1

- The kitchen is equipped with an ATAG dishwasher, combi oven with integrated microwave, induction stove, stainless steel extractor hood with stainless steel splash screen, fridge with freezer compartment and black composite kitchen worktop.
- Balcony on the south-east of approx. 7.4 m².
- One bedroom of approx. 11.9 m².
- The indoor storage room includes space, drains and water lines for the washing machine and dryer.
- The bathroom has a walk-in shower with hard glass wall and walk-in door, stainless steel shower drain, sink and electric towel radiator. The floor has large light gray tiles; the walls have white wall tiles up to the ceiling.

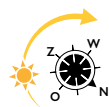
- Floors 3 to 13
- Floor space approx. 52.8 m²
- 1 bedroom
- Outdoor space 7.4 m²

LIVING IN THE
MIDDLE OF
THE CULTURAL HEART
OF THE HAGUE

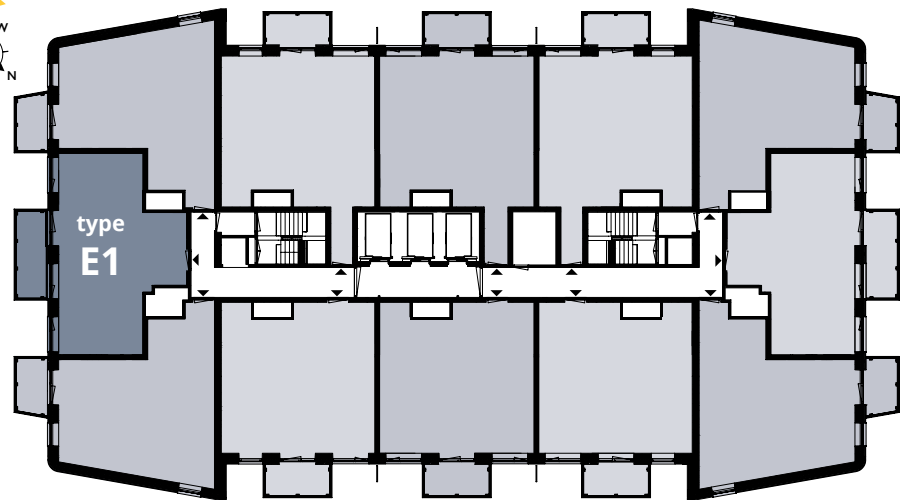




FLOORS 3 TO 13



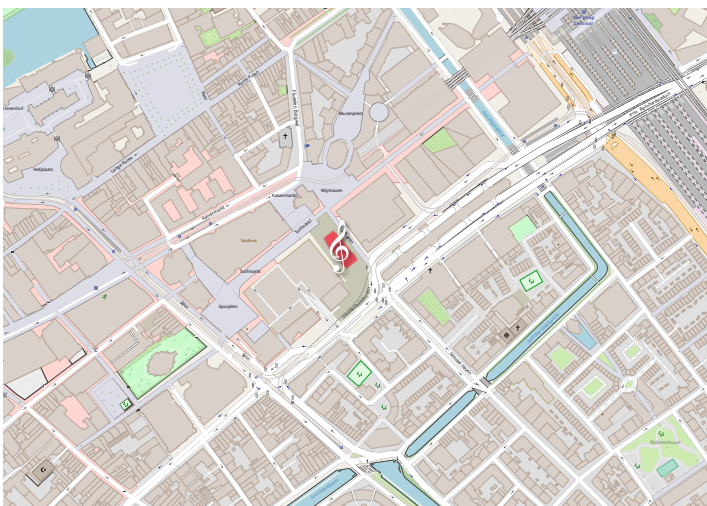
Schedeldoekshaven



Trufmarkt

Turfhaven

LOCATION



YOU CAN FIND THIS TYPE AT:

3rd floor Turfhaven 59	9th floor Turfhaven 203
4th floor Turfhaven 83	10th floor Turfhaven 227
5th floor Turfhaven 107	11th floor Turfhaven 251
6th floor Turfhaven 131	12th floor Turfhaven 275
7th floor Turfhaven 155	13th floor Turfhaven 299
8th floor Turfhaven 179	