

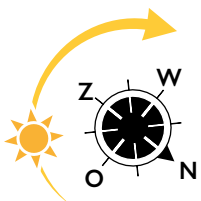


LIVING IN THE MIDDLE OF THE CULTURAL HEART OF THE HAGUE

TYPE D2 Schedeldoekshaven-side

- The kitchen is equipped with an ATAG dishwasher, combi oven with integrated microwave, induction stove, stainless steel extractor hood with stainless steel splash screen, fridge with freezer compartment and black composite kitchen worktop.
- Balcony on the south-east of approx. 4.7 m².
- One bedroom of approx. 11.8 m².
- The indoor storage room includes space, drains and water lines for the washing machine and dryer.
- The bathroom has a walk-in shower with hard glass wall and walk-in door, stainless steel shower drain, sink and electric towel radiator. The floor has large light gray tiles; the walls have white wall tiles up to the ceiling.

- Floors 3 to 13
- Floor space approx. 55.7 m²
- 1 bedroom
- Outdoor space 4.7 m²

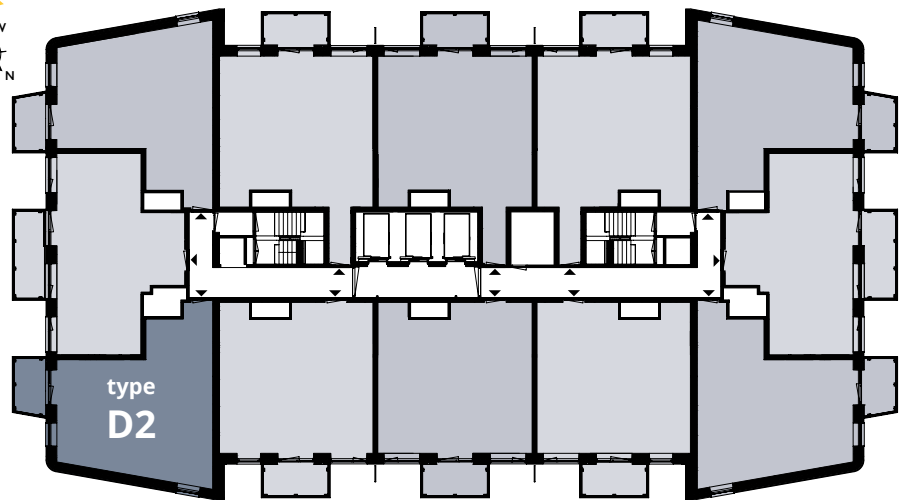




FLOORS 3 TO 13



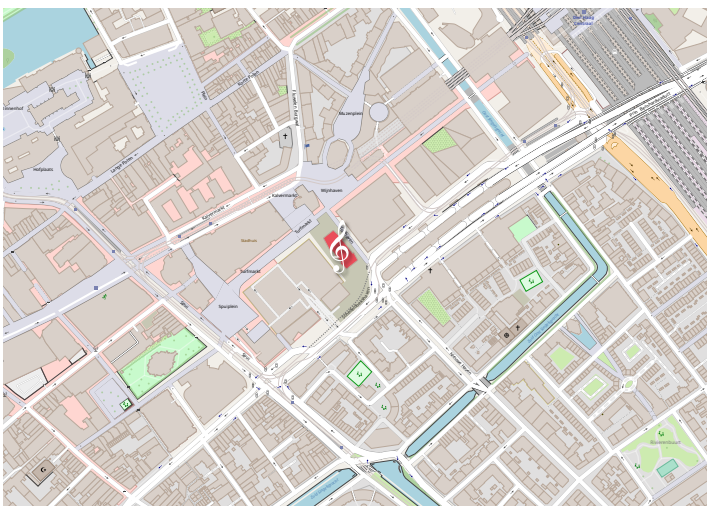
Schedeldoelshaven



Trufmarkt

Turfhaven

LOCATION



YOU CAN FIND THIS TYPE AT:

- | | |
|---------------------------|----------------------------|
| 3rd floor Turfhaven 61 | 9th floor Turfhaven 205 |
| 4th floor Turfhaven 85 | 10th floor Turfhaven 229 |
| 5th floor Turfhaven 109 | 11th floor Turfhaven 253 |
| 6th floor Turfhaven 133 | 12th floor Turfhaven 277 |
| 7th floor Turfhaven 157 | 13th floor Turfhaven 301 |
| 8th floor Turfhaven 181 | |