

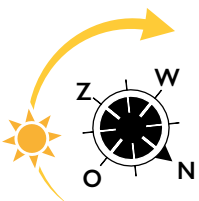


## LIVING IN THE **MIDDLE OF** **THE CULTURAL HEART** OF THE HAGUE

### TYPE D1 Turfmarkt-side

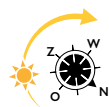
- Floors 3 to 13
- Floor space approx. 55.4 m<sup>2</sup>
- 1 bedroom
- Outdoor space 4.7 m<sup>2</sup>

- The kitchen is equipped with an ATAG dishwasher, combi oven with integrated microwave, induction stove, stainless steel extractor hood with stainless steel splash screen, fridge with freezer compartment and black composite kitchen worktop.
- Balcony on the north-west of approx. 4.7 m<sup>2</sup>.
- One bedroom of approx. 11.8 m<sup>2</sup>.
- The indoor storage room includes space, drains and water lines for the washing machine and dryer.
- The bathroom has a walk-in shower with hard glass wall and walk-in door, stainless steel shower drain, sink and electric towel radiator. The floor has large light gray tiles; the walls have white wall tiles up to the ceiling.

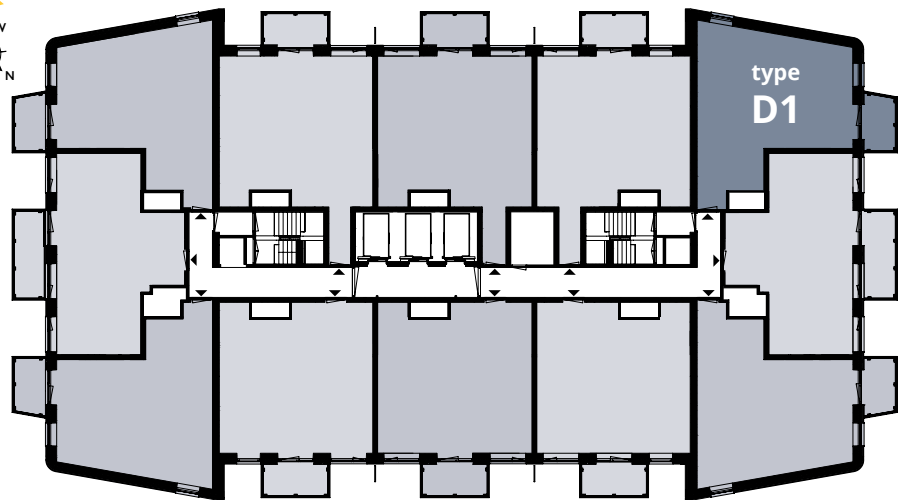




## FLOORS 3 TO 13



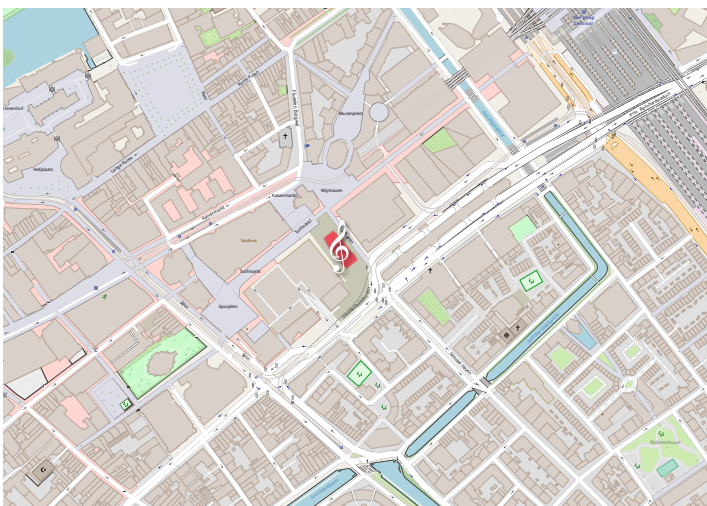
Schedeldoekshaven



Trufmarkt

Turfhaven

## LOCATION



## YOU CAN FIND THIS TYPE AT:

3rd floor	Turfhaven 73	9th floor	Turfhaven 217
4th floor	Turfhaven 97	10th floor	Turfhaven 241
5th floor	Turfhaven 121	11th floor	Turfhaven 265
6th floor	Turfhaven 145	12th floor	Turfhaven 289
7th floor	Turfhaven 169	13th floor	Turfhaven 313
8th floor	Turfhaven 193		