



LIVING IN THE MIDDLE OF THE CULTURAL HEART OF THE HAGUE

TYPE D1 Schedeldoekshaven-side

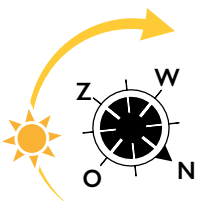
Floors 3 to 13

Floor space
approx. 55.4 m²

1 bedroom

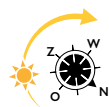
Outdoor space
4.7 m²

- The kitchen is equipped with an ATAG dishwasher, combi oven with integrated microwave, induction stove, stainless steel extractor hood with stainless steel splash screen, fridge with freezer compartment and black composite kitchen worktop.
- Balcony on the south-east of approx. 4.7 m².
- One bedroom of approx. 11.8 m².
- The indoor storage room includes space, drains and water lines for the washing machine and dryer.
- The bathroom has a walk-in shower with hard glass wall and walk-in door, stainless steel shower drain, sink and electric towel radiator. The floor has large light gray tiles; the walls have white wall tiles up to the ceiling.

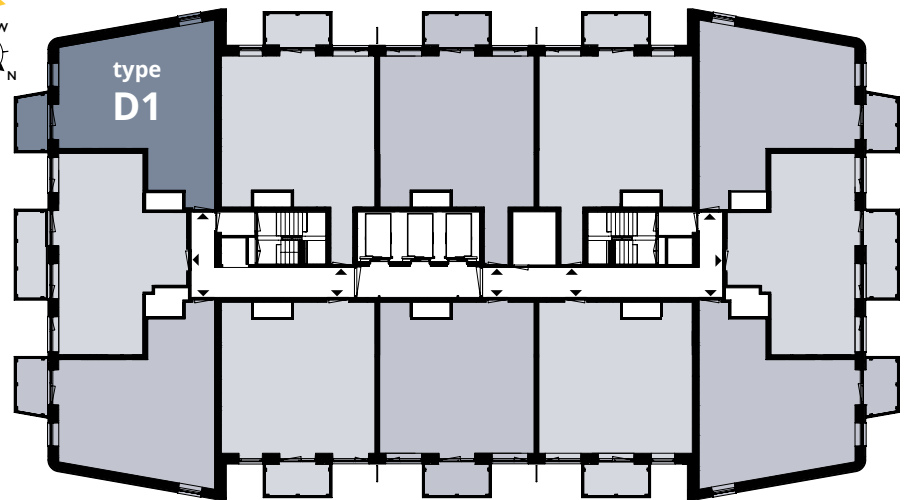




FLOORS 3 TO 13



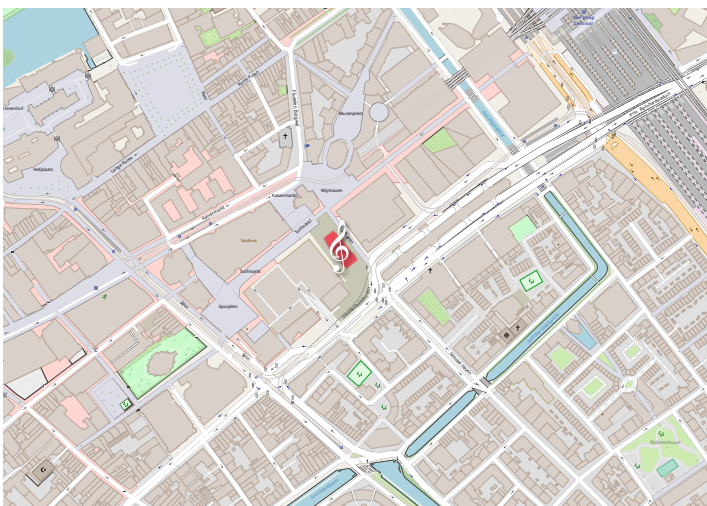
Schedeldoekshaven



Trufmarkt

Turfhaven

LOCATION



YOU CAN FIND THIS TYPE AT:

3rd floor	Turfhaven 57	9th floor	Turfhaven 201
4th floor	Turfhaven 81	10th floor	Turfhaven 225
5th floor	Turfhaven 105	11th floor	Turfhaven 249
6th floor	Turfhaven 129	12th floor	Turfhaven 273
7th floor	Turfhaven 153	13th floor	Turfhaven 297
8th floor	Turfhaven 177		