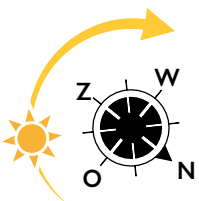
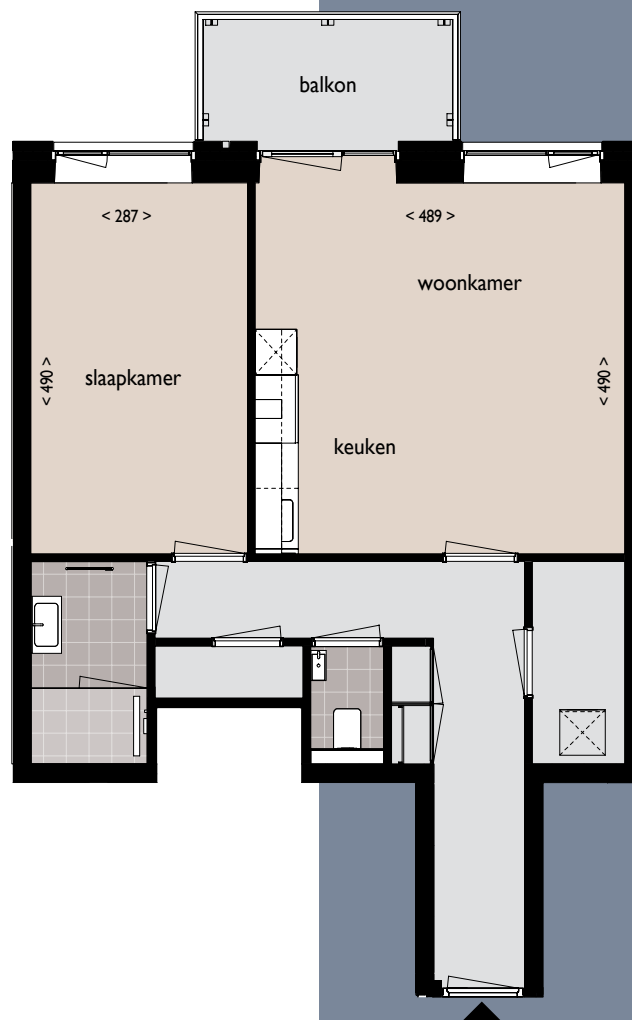


## TYPE A2

- The kitchen is equipped with an ATAG dishwasher, combi oven with integrated microwave, induction stove, stainless steel extractor hood with stainless steel splash screen, fridge with freezer compartment and black composite kitchen worktop.
- Balcony on the south-west of approx. 5.8 m<sup>2</sup>.
- One bedroom of approx. 14 m<sup>2</sup>.
- The indoor storage room includes space, drains and water lines for the washing machine and dryer.
- The bathroom has a walk-in shower with hard glass wall and walk-in door, stainless steel shower drain, sink and electric towel radiator. The floor has large light gray tiles; the walls have white wall tiles up to the ceiling.

- Floors 3 to 23
- Floor space approx. 62.5 m<sup>2</sup>
- 1 bedroom
- Outdoor space 5.8 m<sup>2</sup>

LIVING IN THE  
**MIDDLE OF**  
**THE CULTURAL HEART**  
OF THE HAGUE

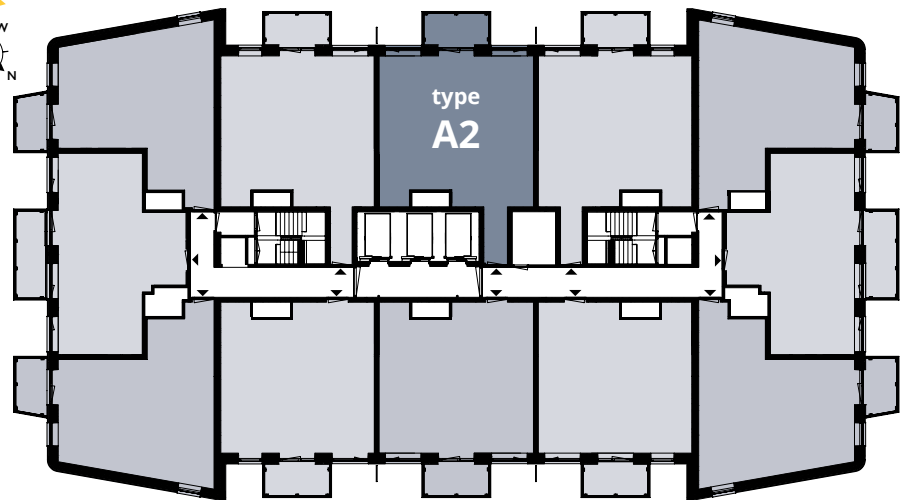




## FLOORS 3 TO 23 Floors 3 to 13 shown here)



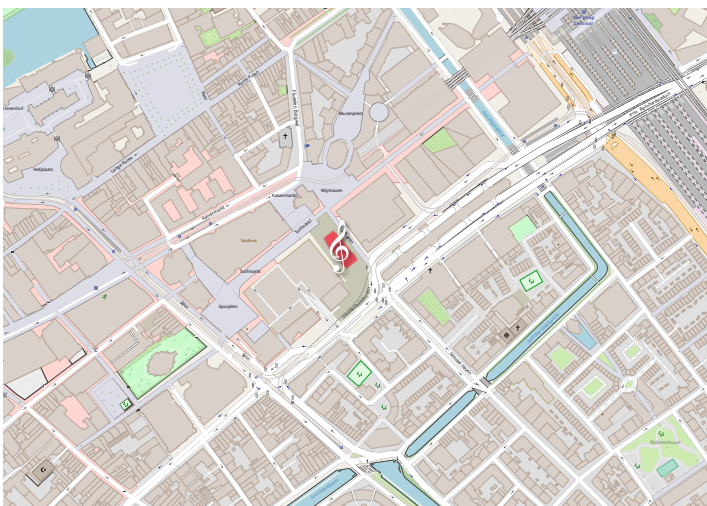
Schedeldoekshaven



Trufmarkt

Turfhaven

## LOCATION



## YOU CAN FIND THIS TYPE AT:

3rd floor   Turfhaven 77	14th floor   Turfhaven 337
4th floor   Turfhaven 101	15th floor   Turfhaven 357
5th floor   Turfhaven 125	16th floor   Turfhaven 377
6th floor   Turfhaven 149	17th floor   Turfhaven 397
7th floor   Turfhaven 173	18th floor   Turfhaven 417
8th floor   Turfhaven 197	19th floor   Turfhaven 437
9th floor   Turfhaven 221	20th floor   Turfhaven 457
10th floor   Turfhaven 245	21st floor   Turfhaven 477
11th floor   Turfhaven 269	22nd floor   Turfhaven 497
12th floor   Turfhaven 293	23th floor   Turfhaven 517
13th floor   Turfhaven 317	